

Exaquantum and ExaquantumARA OPC Gateway Configuration

KB-1098-23

Document Summary	
Article Type	User Guide
Products Affected	Exaquantum OPC Gateways
Versions Affected	R3.20
Function Affected	ARA Update Job
Available Resolution	Correct the configuration of the OPC Gateways
Audience	System Integrators and Administrators
Summary	The Exaquantum OPC Gateways and Exaquantum ARA OPC Gateways configuration need to match otherwise the ARA Update Job will error
Review Date	Document to be reviewed before Feb 2024

Blank Page

Table of Contents

Table of Contents 1

Chapter 1 Introduction 2

 1.1 Audience..... 2

Chapter 2 OPC Configuration 3

Chapter 3 Further Reading..... 4

 Copyright and Trademark Notices 5

 Highlights..... 6

Chapter 1 Introduction

This User Guide covers the configuration of the Exaquantum and Exaquantum/ARA OPC Gateways.

The Exaquantum/ARA Update Job can error if there is a mismatch between the Exaquantum OPC Gateway and Exaquantum/ARA OPC Gateway configuration.

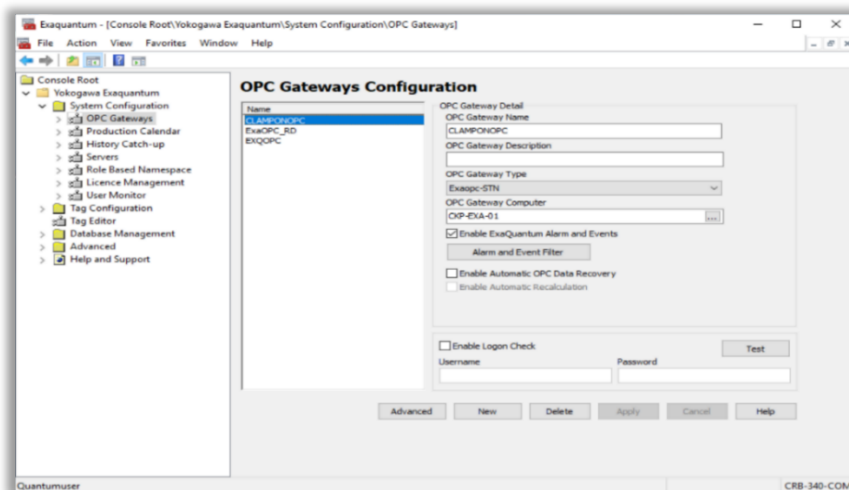
1.1 Audience

This guide is intended for System Integrators and Administrators.

Chapter 2 OPC Configuration

When using Exaquantum\ARA any A&E enabled OPC Gateway configuration for needs to match if the Exaquantum OPC Gateway is collecting Alarm and Event data, otherwise an error will stop the ARA Update Job from running.

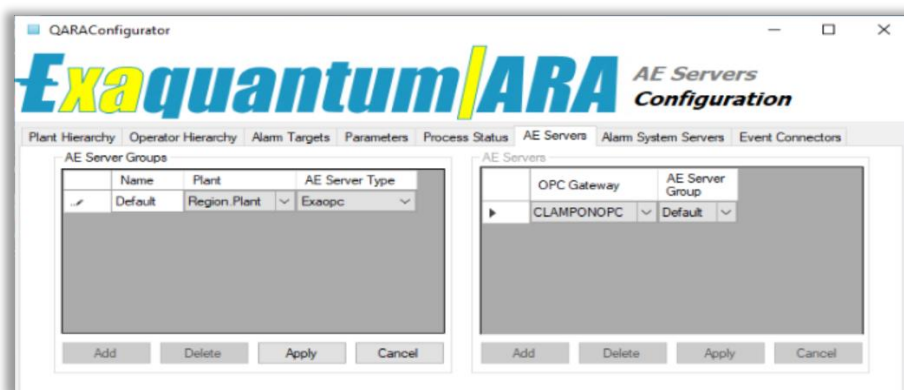
The Exaquantum OPC Gateways are configured using the OPC Gateway Configuration Tool in the Exaquantum Administration Tools.



Exaquantum will collect Alarm and Events if the Enable ExaQuantum Alarm and Events option is selected.

In the above example the highlighted gateway is the only gateway that is configured to collect alarm and events.

In the ARA Servers tab of the ARA Configurator any OPC Gateway that has the Enable ExaQuantum Alarm and Events selected must also be configured here.



If the OPC Gateways that have the Enable ExaQuantum Alarm and Events selected are not configured in the ARA Servers tab of the ARA Configurator an error can occur that will stop the ARA Update Job.

To add an OPC Gateway please refer to the chapter 4.6 of the IM 36J40A25-01EN ARA Engineering Guide.

Chapter 3 Further Reading

If you have any questions or queries about the information contained in this document, then please contact Yokogawa Marex at customer.services@ymx.yokogawa.com

The Yokogawa Marex [Affiliate Portal](#) contains a Knowledge Base Section which contains various articles that can be used when troubleshooting an Exaquantum System.

The Knowledge Base will evolve over time with articles being updated and new articles being added to assist affiliates in dealing with problems that may occur with Exaquantum and its various associated applications.

Copyright and Trademark Notices

© 2023 Yokogawa Electric Corporation

■ All Rights Reserved

The copyright of the programs and online manuals contained in the software medium of the Software Product shall remain with YOKOGAWA.

You are allowed to print the required pages of the online manuals for the purposes of using or operating the Product; however, reprinting or reproducing the entire document is strictly prohibited by the Copyright Law.

Except as stated above, no part of the online manuals may be reproduced, transferred, sold, or distributed to a third party in any manner (either in electronic or written form including, without limitation, in the forms of paper documents, electronic media, and transmission via the network).

Nor it may be registered or recorded in the media such as films without permission.

■ Trademark Acknowledgements

- CENTUM, ProSafe, Exaquantum, Vnet/IP, PRM, Exaopc, Exaplog, Exapilot, Exasmoc and Exarqe are registered trademarks of Yokogawa Electric Corporation.
- Microsoft, Windows, Windows Server, SQL Server, Excel, Internet Explorer, SharePoint, ActiveX, Visual Basic, Visual C++, and Visual Studio are either registered trademarks or trademarks of Microsoft Corporation in the United States and other countries.
- Adobe and Acrobat are registered trademarks of Adobe Systems Incorporated and registered within particular jurisdictions.
- Ethernet is a registered trademark of XEROX Corporation.
- All other company and product names mentioned in this manual are trademarks or registered trademarks of their respective companies.
- We do not use TM or ® mark to indicate those trademarks or registered trademarks in this manual.
- We do not use logos in this manual.

Highlights

The Highlights section gives details of the changes made since the previous issue of this document.

- **Summary of Changes**

This is Issue 1.0 of the document related to Product Library version 1.0.

- **Detail of Changes**

The changes are as follows:

Chapter/Section/Page	Change